

PRODUCT INFORMATION PACKET

Model No: 145TBWD5327
Catalog No: N274
1 1/2, 1800, TEFC, 145TC, 1/60/115/208-230
Washdown Duty



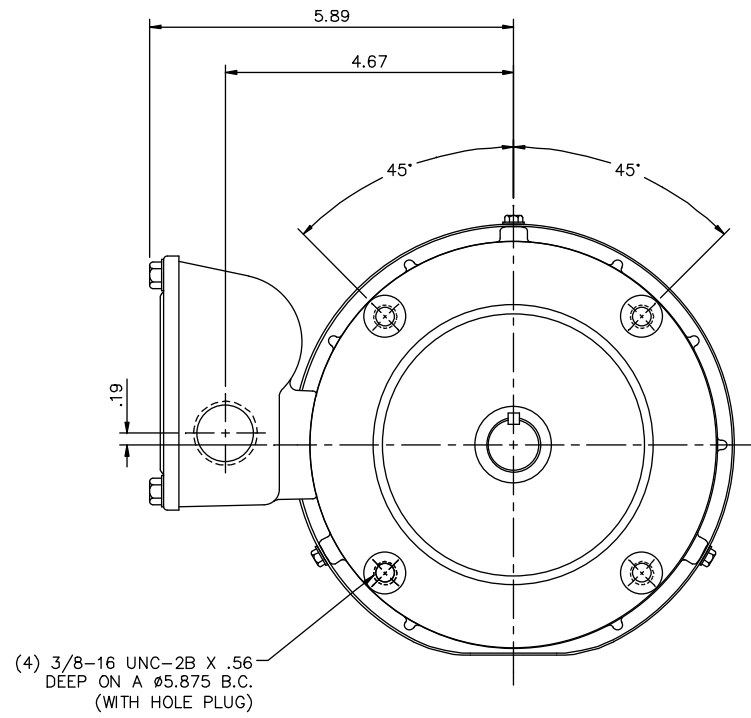
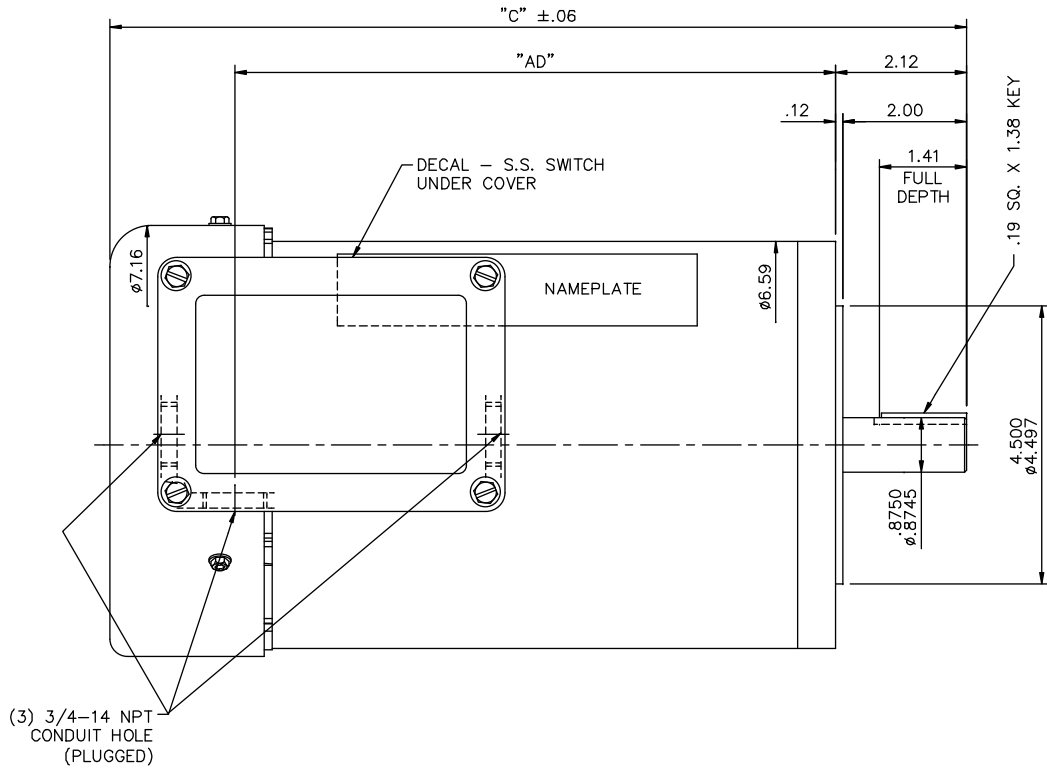
Regal and Marathon are trademarks of Regal Beloit Corporation or one of its affiliated companies.
©2018 Regal Beloit Corporation, All Rights Reserved. MC017097E

Nameplate Specifications

Output HP	1.50 Hp	Output KW	1.1 kW
Frequency	60 Hz	Voltage	115/208-230 V
Current	14.8/7.8-7.4 A	Speed	1740 rpm
Service Factor	1.15	Phase	1
Efficiency	80 %	Duty	Continuous
Insulation Class	F	Design Code	N
KVA Code	J	Frame	145TC
Enclosure	Totally Enclosed Fan Cooled	Overload Protector	No
Ambient Temperature	40 °C	Drive End Bearing Size	6205
Opp Drive End Bearing Size	6203	UL	Recognized
CSA	Y	CE	Y
IP Code	55		

Technical Specifications

Electrical Type	Capacitor Start Capacitor Run	Starting Method	Across The Line
Poles	4	Rotation	Selective Counterclockwise
Mounting	Round	Motor Orientation	Horizontal
Drive End Bearing	Ball	Opp Drive End Bearing	Ball
Frame Material	Stainless Steel	Shaft Type	T
Overall Length	14.87 in	Frame Length	9.50 in
Shaft Diameter	0.875 in	Shaft Extension	2.12 in
Assembly/Box Mounting	F1 Only		
Outline Drawing	028623ME-950	Connection Diagram	005314.03ME



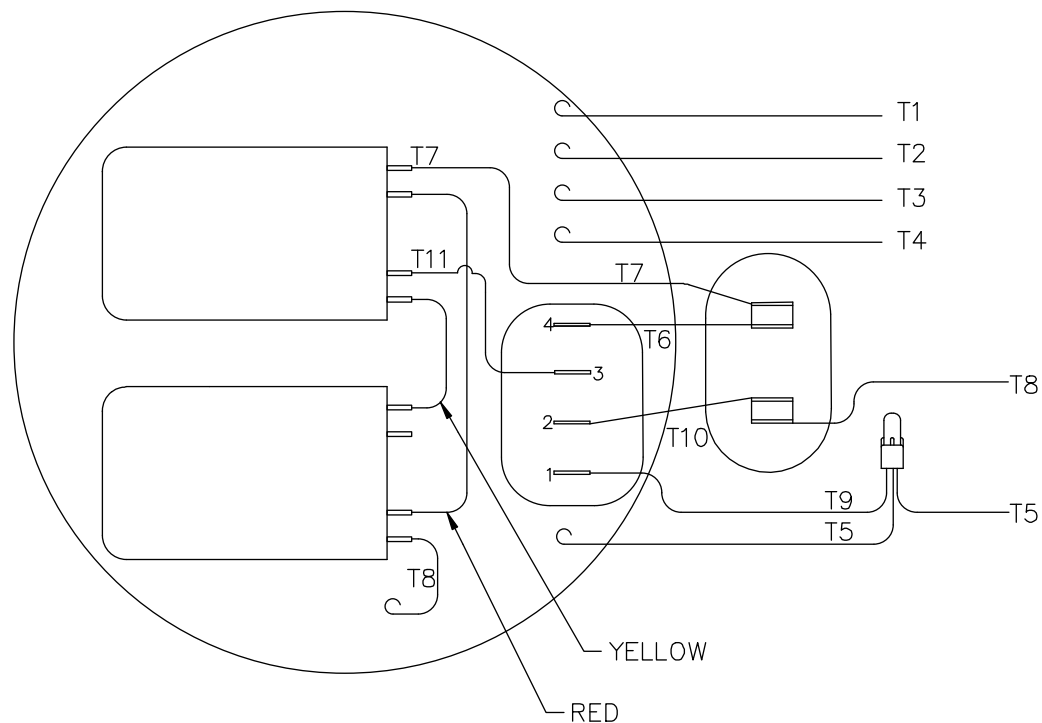
DASH NO.	"C"	"AD"
800	13.37	9.23
850	13.87	9.73
900	14.37	10.23
950	14.87	10.73

MAXIMUM FACE RUNOUT TO BE .004 T.I.R.
 MAXIMUM PILOT ECCENTRICITY .004 T.I.R.
 PERMISSIBLE SHAFT RUNOUT .002 T.I.R.

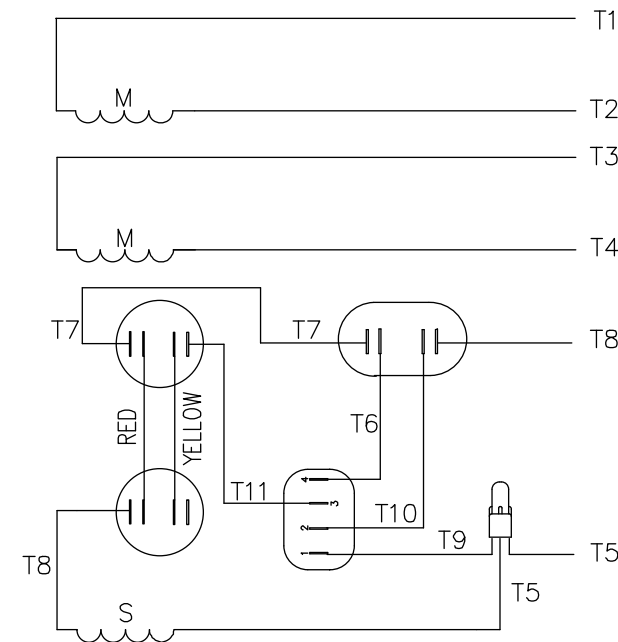
ALL-STAINLESS
 VITON CONDUIT BOX & COVER GASKETS
 VITON O-RINGS IN ENDBELL RABBETS & UNDER THRU BOLT HEADS
 VITON SHAFT SEALS
 BREATHER PLUGS IN CONDUIT BOX & L.E. ENDBELL
 ALL STAINLESS STEEL CONSTRUCTION

NO.		REVISION	BY & DATE	CHK	ANG	FINISH	TOLERANCES UNLESS SPECIFIED			DRAWN	LST	
							DEC.	INCHES		CHK		
							.X	±.1		TITLE	LST	8/21/13
							.XX	±.03		OUTLINE - 140TC FRAME	CHK	
							.XXX	±.005	TEFC - "C" FACE	APPD		
							.XXXX	±.0005	MAT'L. STAINLESS STEEL DUCK	SCALE	1=2	
										REF		
										FMF		
										PREV		
THIS DRAWING IN DESIGN AND DETAIL IS OUR PROPERTY AND MUST NOT BE USED EXCEPT IN CONNECTION WITH OUR WORK ALL RIGHTS OF DESIGN AND INVENTION ARE RESERVED THIS IS AN ELECTRONICALLY GENERATED DOCUMENT - DO NOT SCALE THIS PRINT							RFP	CAD FILE	028623	SIZE	DRAWING NO.	
							DIST			B	028623ME	REV.

VIEW FROM OUTSIDE OF MOTOR AT SWITCH END.



LINE LEADS



	ROTATION FACING LEAD END	L1	L2	JOIN & INSULATE
HIGH VOLT	C.C.W.	T1	T4, T5	T2, T3 T8
	C.W.	T1	T4, T8	T2, T3 T5
LOW VOLT	C.C.W.	T1, T3 T8	T2, T4 T5	
	C.W.	T1, T3 T5	T2, T4 T8	

		TOLERANCES UNLESS SPECIFIED		MARATHON ELECTRIC		DRAWN LST 8/21/13		
		DEC.	INCHES			CHK		
		.X	±.1			APPD		
		.XX	±.01	TITLE		SCALE 1=1		
		.XXX	±.005	EXTERNAL WIRING DIAGRAM TYPE "K" W/O PROTECTOR		REF		
		.XXXX	±.0005	MAT'L.		FMF		
NO.	REVISION	BY & DATE	CHK	ANG	±1/2'	FINISH	PREV	
THIS DRAWING IN DESIGN AND DETAIL IS OUR PROPERTY AND MUST NOT BE USED EXCEPT IN CONNECTION WITH OUR WORK ALL RIGHTS OF DESIGN AND INVENTION ARE RESERVED THIS IS AN ELECTRONICALLY GENERATED DOCUMENT - DO NOT SCALE THIS PRINT			RFP	CAD FILE 00531403		SIZE	DRAWING NO.	REV.
			DIST			A	005314-03ME	

